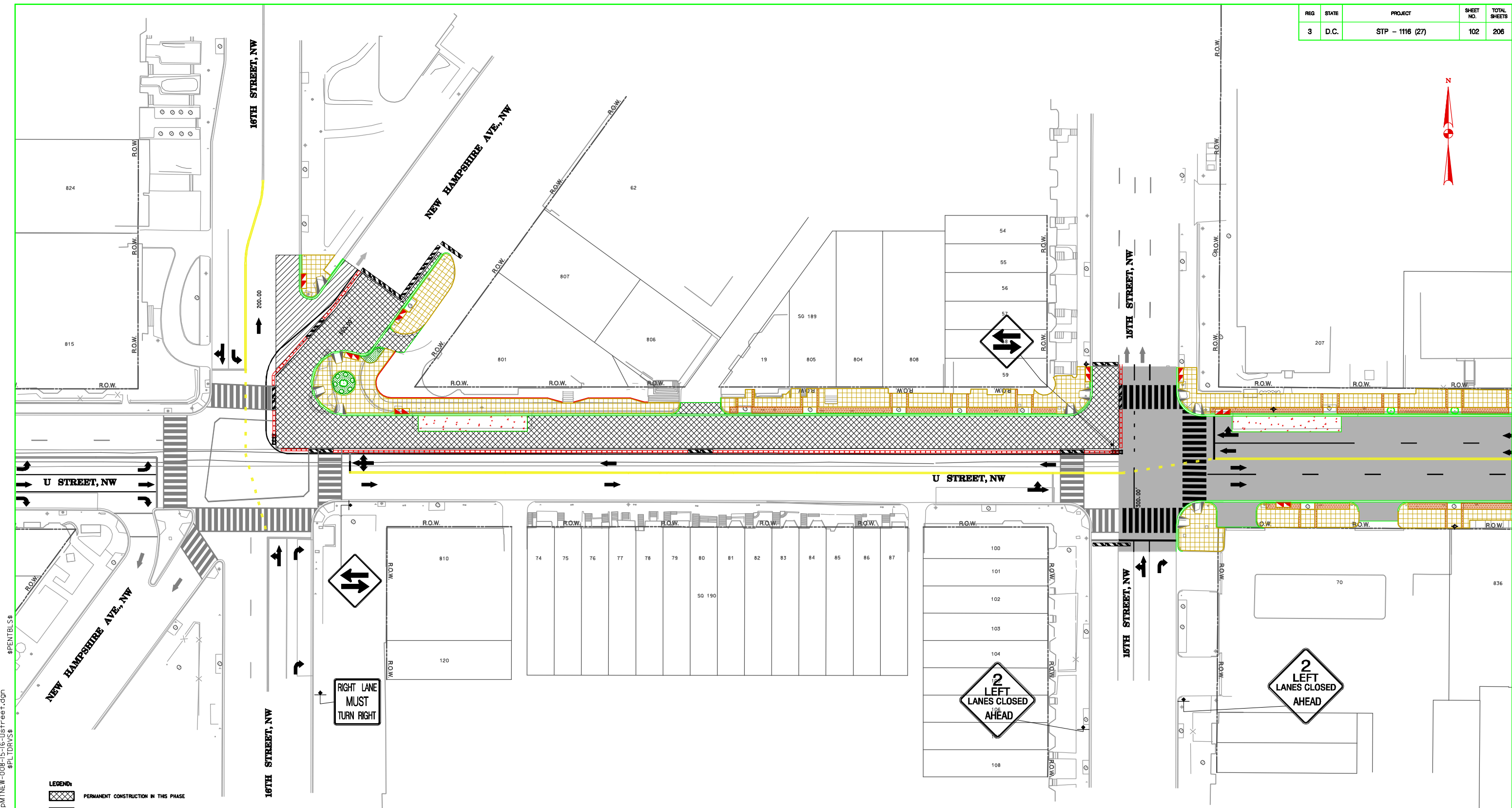
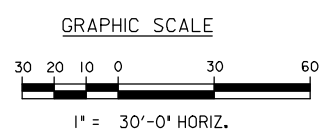


REG	STATE	PROJECT	SHEET NO.	TOTAL SHEETS
3	D.C.	STP - 1116 (27)	102	206



I:\U_Street\TWP\LIST_M01_05-27-2009\30-p\MTNEW-008-15-16-Ustreet.dgn
 Wednesday, June 03, 2009 AT 09:07 AM
 \$PENTBL\$
 \$PLTDRVS\$

- LEGEND:**
- PERMANENT CONSTRUCTION IN THIS PHASE
 - PERMANENT CONSTRUCTION IN PHASE (LATE)
 - PERMANENT CONSTRUCTION COMPLETED IN PREVIOUS PHASE
 - PORTABLE PCC TRAFFIC BARRIERS
 - FLAGGER
 - TYPE BARRICADES
 - TRAFFIC DRUMS
 - CONSTRUCTION ZONE ATTENUATOR
 - TRAFFIC FLOW ARROW
 - SIGN LOCATION SYMBOL
 - SIG. ARROW BOARD



LDICA
 Legion Design / Campbell & Associates
 Consulting Engineers • Washington, D.C.

NO.	DESCRIPTION	NAME	DATE
REVISIONS			

D.C. DEPARTMENT OF TRANSPORTATION
INFRASTRUCTURE PROJECT MANAGEMENT ADMINISTRATION
PROJECT MANAGEMENT DIVISION

RESURFACING / REHABILITATION
OF U STREET, N.W.
FLORIDA AVENUE TO 9TH STREET

MAINTENANCE OF TRAFFIC PLANS
15TH STREET TO 16TH STREET

PROJECT ENG. RMJ DESIGNED BY RMJ/MLC CHECKED BY MFM/AE/JDC DRAWN BY RMJ/GUL/GSS PROJECT MGR. MFM	DIVISION CHIEF DATE _____ FILE _____ SHEET 102 OF 206
--	--